

Shimaden Lite

Shimaden Controllers and Shimaden Lite software - working together to offer one of the most user friendly and advanced packages available. Shimaden Lite is a simple user interface for operator type changes to a controller.

USB/RS232 to
RS485 converter

Data Highway

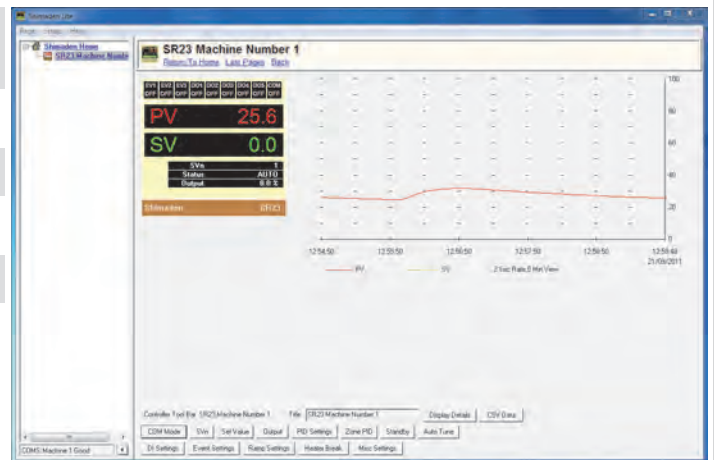


2400-IS = RS485 & RS422
2100-IS = RS485 & RS422
2100-NS = RS422 only

Controllers Supported (Shimaden Lite 1.4):



RS485 or RS232*:	RS422 or RS232*:
SR90 Series	FP21
SD16A / SD16	SR25
SD24	SD20
SR80 Series	SR253
FP93	SR73A
SR23	
FP23	
SRS10 Series	
MR13 [^]	



Features:

- Auto seek: Find controllers automatically.
- Auto configuration: Shimaden Lite automatically adopts controller configuration.
- User friendly controller configuration from computer.
- Password protection.
- Trend graph of PV & SV.
- Trend graph has most recent 100 scans.
- Scan settings 2 sec, 15 sec, 1 min.
- Controller identification label.
- CSV Report generation for viewing data in Excel.
- Alert window for showing status of controller events.

Notes:

- * 2400-IS / 2100-IS / 2100-NS not required when using RS232.
- * RS232 will connect to one controller only.
- [^] MR13 has no SV facility from computer.

Please Note:

Shimaden Lite should only be used on Windows 7, XP or Vista and is not a replacement for a full SCADA system. Please contact Intech for information on our MicroScan full SCADA system.