

Trutrack Data Loggers

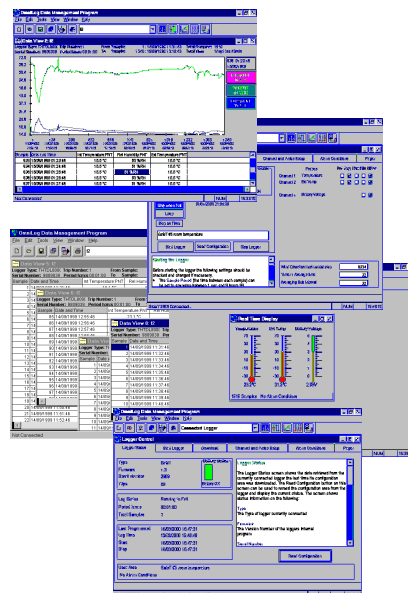


Self Contained Data Loggers. Single & Multi Channel

Temperature
 External RTD (Pt100/PT500/PT1000) Probes
 Thermocouple
 Current – mA
 Voltage – mV
 Humidity
 pH
 Water Level
 Pressure
 Light Intensity
 Rainfall
 Windspeed

Applications:

- Coolstores
- Refrigeration
- Shipping
- Heat Treatment
- Laboratories
- Research
- Meat Industry
- Mining
- Timber/Forestry
- Food Processing
- Plastic/Rubber
- Water/Waste Water
- Textile
- & many others



Connects direct to
 PC or Modem



- Easy entry Screen
- Graph & Data Screens
- Multi Graph Display
- Reports
- Alarms
- Converts to Excel
- Real Time Data
- Real Time Logger connection
- Logger Battery Status
- Calibration



GP-MC

Overview.

The GP-MC is a high resolution (12 bit) multi purpose Data Logger with eight analogue and two digital pulse inputs. It supports an additional 15 channels of input from remote sensors on an RS485 interface.

It features eight channels that can be used with analogue sensors to measure Temperature, Pressure, Humidity, Light, Wind Direction, Voltage and Current as well as a Digital pulse channel for Rainfall, Wind speed, Pulse Count, Flow and Frequency measurements up to 60 kHz. The GP-MC can be controlled and interrogated over phone lines using a standard modem link. The Logger can send SMS messages when an Alarm Condition occurs.

MODEL	DESCRIPTION
GP-MC	10 Input General Purpose Logger. 8 Analogue inputs – individually configurable. 2 Digital pulse input channel. 1,000,000 8 bit samples; 500,000 12 bit samples. Option; IP66 Weatherproof enclosure.

Standard External Sensors & Plug Sets for GP-MC:

GP-MC inputs are individually configurable using OmniLog. Each input requires conditioning using a 'Probe set'.

RS485 expansion Options (15 total channels available)

RPC	Remote Probe Controller (3x Analogue channels, 1x Fast Pulse channel)
-----	---

SWDL-DLC# **OmniLog Software and Computer Download Cable**
Please specify one of the following download cables:
DLC5USB GP-MC USB download cable
DLC5 GP-MC RS232 download cable



GP-MC

RS485
channel expansion



RPC

www.intech.co.nz/gp-mc

LCD Series

MODEL	DESCRIPTION
HT-LCD	Humidity and temperature. Range -30~70°C. Internal humidity and internal temperature sensor.
THT-LCD	Humidity and dual temperature Range -30~70°C. External humidity with temperature, one internal temperature sensor.
Tc-LCD	Thermocouple Types: K, J, N, R, T One internal and one external temperature sensor. Internal temperature sensor, range -30~70°C.
HHT-03	External Thermocouple Probe. Type K temperature bead probe for Tc-LCD. Spear probe 2m pvc type K cable with handle & mini plug. Others available, please contact Intech.
Pt-LCD	RTD Types: Pt100 / Pt500 / Pt1000 One internal and one external RTD temperature sensor. Internal temperature sensor, range -30~70°C.
P-LCD	Pressure Pressure sensor input (see below). Internal temperature sensor, range -30~70°C.
P100-PS	Range -15~100psi
P250-PS	Range -15~250psi
P500-PS	Range -15~500psi
SWDL-DLC#	OmniLog Software and Computer Download Cable Please specify one of the following download cables: DLC8USB LCD Series USB download cable DLC8 LCD Series RS232 download cable

HT-LCD

Tc-LCD



THT-LCD



Overview.

LCD Series loggers are handheld, high resolution (16 bit) data loggers with a liquid crystal display. The LCD display means that real-time readings can be viewed without having to connect the logger to a computer. The logger contains an integral internal temperature sensor which can be logged separately to its main function. High accuracy and large storage capacity make the LCD series ideal for most industrial and commercial applications.

Features.

Storage Capacity of over 500,000 samples!
1~5 year battery life depending on usage.
Dimensions = 130mm x 80mm x 30mm

www.intech.co.nz/lcd-loggers

HR-Series

Rugged High Accuracy.

HR series loggers are small, single and multi channel loggers housed in a rugged 20mm diameter stainless steel case. The logger contains an integral internal temperature probe which is logged separately to its main function. High accuracy and large storage capacity make the HR series ideal for most industrial and commercial applications. The HR loggers can also be left connected permanently to the PC for instantaneous viewing of the data. All data is real time (time and date stamped). All TruTrack loggers will connect directly to a modem for remote downloading of data and will also send an SMS message on an alarm condition.



MODEL	DESCRIPTION
T-HR	Single temperature Logger Internal temperature sensor, range -30~70°C.
HT-HR	Humidity and temperature. Range -30~70°C. Humidity and internal temperature sensor.
THT-HR	Humidity and dual temperature Range -30~70°C. Humidity, one internal & one external temperature sensor.
Tc-HR	Thermocouple Types: K, J, T, N, R One internal and one external temperature sensor. Internal temperature sensor, range -30~70°C. External Thermocouple Probe.
HHT-03	Type K temperature bead probe for Tc-HR. Spear probe 2m pvc type K cable with handle & mini plug. Others available, please contact Intech.
Pt-HR	Dual temperature Pt100/Pt500/Pt1000. One internal and one external temperature sensor. Internal temperature sensor, range -30~70°C. External RTD temperature sensor, range -200~600°C.
TP-Pt100	Pt100 temperature probe for Pt-HR. Range -100~150°C. 4.7 x 100mm SS probe with 2m tefzel cable.
mV-HR mV-HR Lead	Milli-volt Logger. Range 0~100mVdc. Test Lead Set
WT-HR-250 WT-HR-500 WT-HR-1000 WT-HR-1500 WT-HR-2000	Water level and Temperature Logger 64,000 Samples. To log water level between 0~0.25m. To log water level between 0~0.5m. To log water level between 0~1.0m To log water level between 0~1.5m To log water level between 0~2.0m Option for 316 S/S for Salt water applications.
pH-HR	pH with temperature compensation For use with a Pt100 temperature compensated pH probe (not included)
GP-HR	4 Input General Purpose Logger 3 Analogue inputs – individually configurable. 1 Digital pulse input channel. <i>See next page for more information on the GP-HR > Standard External Sensors & Plug Sets for GP-HR</i>
mA1-PS mA3-PS mA3-PS +P 5VD2-10VD1-PS mA1-5VD1-Pt1-PS Pt3-PS Flow-mA2-PS ACM-mA2-PS	One 4~20mA or 0~20mA input. Three 4~20mA or 0~20mA inputs. Three 4~20mA or 0~20mA inputs c/w pulse. Two 0~5V input plus one 0~10V inputs. One 4~20mA plus one 0~5V plus one Pt1000 temp probe. Three Pt1000 temp probes. Coil or open collector plus two 4~20mA inputs. Flow metering off the pump run contact plus two 4~20mA inputs.
SWDL-DLC#	OmniLog Software and Computer Download Cable Please specify one of the following download cables: DLC3USB HR Series USB download cable DLC3 HR Series RS232 download cable

www.intech.co.nz/hr-loggers

Specifications

- Internal Temperature Sensor**
There is an internal temperature sensor that can be configured on any of the channels including the Fast Pulse Digital channel.
- External Sensor Connector**
Switchcraft Plug
Weatherproof
IP66
- Total Readings** *Some models are higher capacity.
Over 500,000 samples!
- Factory replaceable battery**
One to five year life depending on usage.
The data is retained in the case of battery failure.
- Battery life indication**
Status and Start Logger Screens of the OmniLog Software have a Battery Status Monitor
- Alarms**
Two independent Alarms
Triggered on any combination of six user configurable Alarm Conditions
SMS Messaging
Alarms can be visually checked using the OmniLog Software.
- Start modes**
Start immediately
Start on date/time.
- Stop modes**
Stop when memory is full
Stop on date/time
Loop around (continues logging)
- Logging Modes - Each channel can be set to log any combination of:**
Point readings (actual)
Average reading (since last sample)
Maximum reading (since last sample)
Minimum reading (since last sample)
- Sample Interval** is user selectable from 1 second to 10 hours in 1 second increments
- Resolution**
12 bit Analogue to Digital Converter
- Operating Conditions:**
-30°C to +70°C (-22°F to + 158°F)
Outdoor use. IP66
Time accuracy: ±5 seconds per day at 20°C (68°F)
- Size:**
20 mm x 168mm (0.79" x 6.61") *Length may vary
- Weight:** 110gm (3.88oz)

GP-HR

The new mark 4 GENERAL Purpose TruTrack Logger.

The TruTrack GP-HR is a multi purpose Data Logger that can be configured to accept input from a wide variety of sensors. It features three channels that can be used with analogue sensors to measure Temperature, Pressure, Humidity, Light, Wind Direction, Voltage and Current as well as a Digital pulse channel for Rainfall, Wind speed, Pulse Count, Flow and Frequency measurements up to 60 kHz. The GP-HR can be controlled and interrogated over phone lines using a standard modem link. The Logger can send SMS messages when an Alarm Condition occurs.



- **Three Analogue Channels**
To log any combination of:
Temperature, Humidity, Pressure,
Light, Wind Direction, Voltage,
Current, Soil Moisture Tension.

- **One Fast Pulse Digital channel**
To Log: Flow, frequency, totalising,
pulse count. Rainfall, wind speed is
an internal temperature sensor (can

be configured on any of the channels including the Fast Pulse Digital channel).

- **External Sensor Connector**
6 pin Switchcraft Plug - Weatherproof - IP66
- **Total Readings**
8 bit Mode (selectable) 1,040,000 readings
12 Bit Mode (selectable) 520,000 readings

Note: Channels can be configured in any combination of 8 bit and 12 bit modes.

- **User replaceable battery**
One to Five year life depending on usage.
One 7.2Volt lithium pack.
The data is retained in case of battery failure.
- **Battery life indication**
Status and Start Logger Screens of the OmniLog Software have a
Battery Status Monitor.

www.intech.co.nz/gp-hr

- **Alarms** : - Two independent Alarms
- Triggered on any combination of six user configurable Alarm Conditions
- Both alarms can be configured to send SMS messages
- Alarms can be visually checked using the OmniLog Software.
- **Start modes**
- Start immediately - Start on date/time.
- **Stop modes**
- Stop when memory is full - Stop on date/time
- Loop around (continues logging)
- **Logging Modes - Each channel can be set to log any combination of:**
- Point readings (actual)
- Average reading (since last sample)
- Maximum reading (since last sample)
- Minimum reading (since last sample)
- **Sample Interval** is user selectable from 1 second to 10 hours in 1 second increments.
- **Resolution**
12 bit Analogue to Digital Converter
Data can be saved in 8 bit mode to conserve memory space.
- **Operating Conditions:**
-30°C to +70°C (-22°F to + 158°F) - Outdoor use. IP66
Time accuracy: ±5 seconds per day at 20°C (68°F)
- **Download time:** 9 minutes, 30 seconds for full logger.
- **Size:** 20 mm x 180mm (0.79" x 7.09")
- **Weight:** 150gm

OmniLog Software

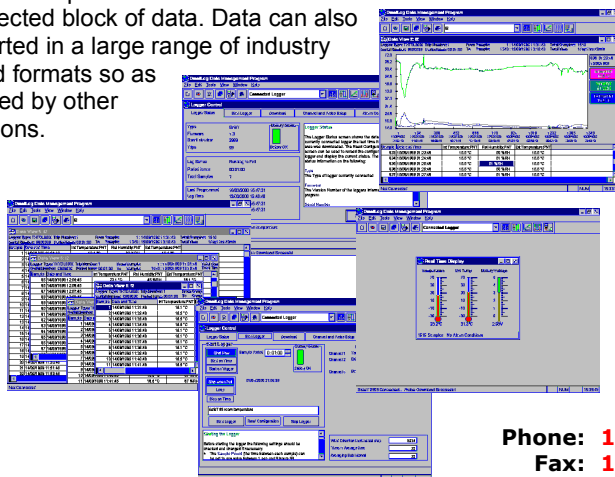
TruTrack OmniLog Software.

The TruTrack OmniLog Data Management software is an application for reading, displaying, analysing, organising and exporting data that has been down loaded from TruTrack data loggers.

Data can be read from data loggers or retrieved from previously saved data files.

A connected data logger can be configured, calibrated, started, read and stopped by this application.

Data retrieved from data loggers and previously saved data files can be viewed and printed in a values spread sheet list, as a graph or as a statistics report. These values, graphs and statistics can be displayed and printed for all data or from a user selected block of data. Data can also be exported in a large range of industry standard formats so as to be used by other applications.



- | | |
|--------------------------------------|-----------------------------|
| • Battery Status | • Offset Calibration |
| • Change Data set units | • Overviews |
| • Calibration Procedures | • Pager Alarm |
| • Channel & Probe Setup | • Pager |
| • Data set History | • Probe Selection |
| • Displaying Real Time readings | • Print |
| • Dew Point | • Quick Graph Draw |
| • Exporting Data sets | • Real Time Screen |
| • Graphs | • Reports |
| • Graph & Values | • Sample Period |
| • High Precision Graph Draw | • Saving Log Files |
| • Humidity Calibration | • Serial Number |
| • Joining Graphs | • Pulse Input |
| • Light Energy | • Trips |
| • Light Intensity Calibration limits | • Tutorial |
| • Leaf Wetness | • Typographical Conventions |
| • Log Status | • Units & Scaling |
| • Log File | • Viewing Data in values |
| • Modem Control | • Wind Chill Factor |
| • Multi channel | |

www.intech.co.nz/omnilog

Phone: 1-800-49-VESPO or 1-239-348-8086
Fax: 1-800-36-VESPO or 1-239-348-9910



controls@vespo.com

>> www.vespo.com