

# WDT-DW Wet & Dry Humidity Tank Assembly

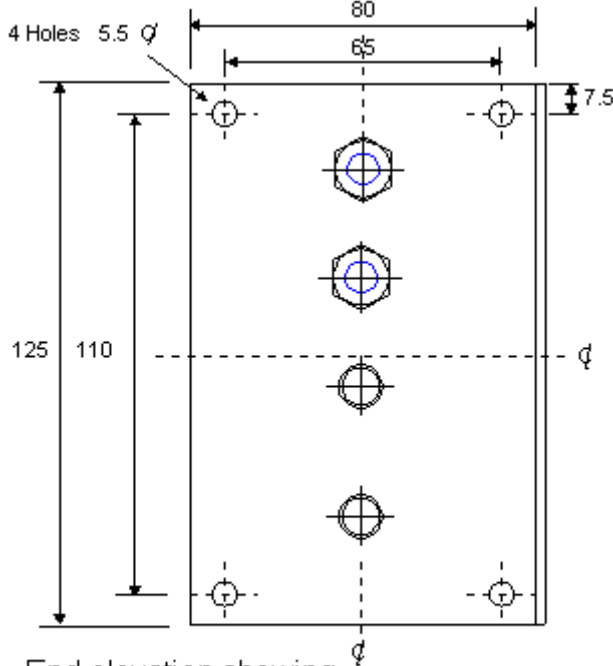
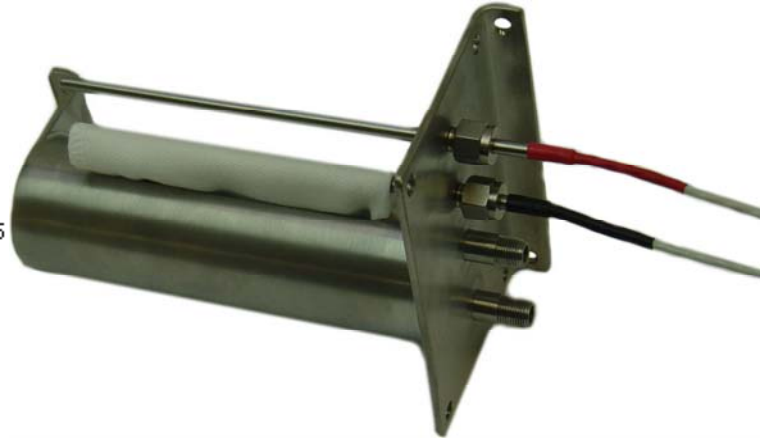
Humidity Wet & Dry Tank Assembly

The WDT-DW has been developed specifically to meet the requirements for Wet & Dry Humidity Tank installations.

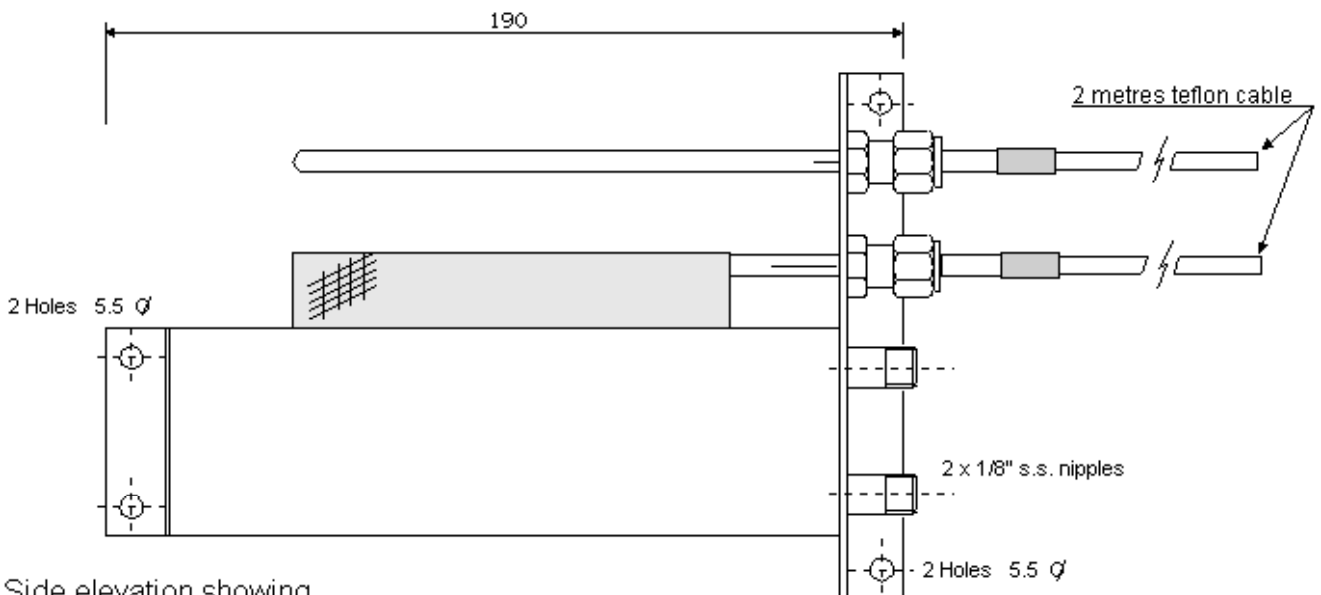
## Ordering Information:

**WDT-DW** Sensors; RTD, Pt100, Band 5. 4.8ø x 150. Others by request.  
 Fill port; 1/8" BSP nipple.  
 Overflow port; 1/8" BSP nipple.  
 Mount; Wall or duct mount.  
 Cable; 4 meters.

**WDT-WICK** Spare wick for wet bulb sensor



End elevation showing duct mount fixings (cutout 96 x 52mm)



Side elevation showing wall mount fixings

**Product Liability.** This information describes our products. It does not constitute guaranteed properties and is not intended to affirm the suitability of a product for a particular application. Due to ongoing research and development, designs, specifications, and documentation are subject to change without notification. Regrettably, omissions and exceptions cannot be completely ruled out. No liability will be accepted for errors, omissions or amendments to this specification. Technical data are always specified by their average values and are based on Standard Calibration Units, unless otherwise specified. Each product is subject to the 'Conditions of Sale'.

**Warning:** These products are not designed for use in, and should not be used for patient connected applications. In any critical installation an independant fail-safe back-up system must always be implemented.